



ESSURE CONFIRMATION TEST WITH TRANSVAGINAL ULTRASOUND (TVU)

Chapter 2: Understanding an Essure Confirmation Test with TVU

Please see [Important Safety Information about Essure®](#), including Boxed Warning,
and refer to the [Essure® Instructions for Use](#)

PP-250-US-1386

← BACK



NEXT →

eLEARNING MODULE: CHAPTERS

Overview of the
Essure TVU/HSG
Confirmation Test
Algorithm

1

Understanding an
Essure Confirmation
Test with TVU

2

Performing and
Interpreting the Essure
Confirmation Test with
TVU

Example of TVU
Confirmation Test

Please see [Important Safety Information about Essure®](#), including Boxed Warning,
and refer to the [Essure® Instructions for Use](#)

BACK



NEXT

CHAPTER 2: UNDERSTANDING AN ESSURE® CONFIRMATION TEST WITH TVU

Relevant Anatomy
and Terminology

Anatomical Planes
Important for TVU
Confirmation Test

Sonographic
Image of an
Essure® Insert

Please see [Important Safety Information about Essure®](#), including Boxed Warning,
and refer to the [Essure® Instructions for Use](#)

BACK



NEXT

ESSURE® CONFIRMATION TEST WITH TVU

Basic TVU skills are required

- Must be trained on the Confirmation Test procedures
- Ability to identify normal anatomy and pelvic structures using sagittal and transverse views of uterus

[AIUM Guidelines for performing pelvic ultrasound](#)

American Institute of Ultrasound in Medicine Practice Guideline for the Performance of Ultrasound of the Female Pelvis

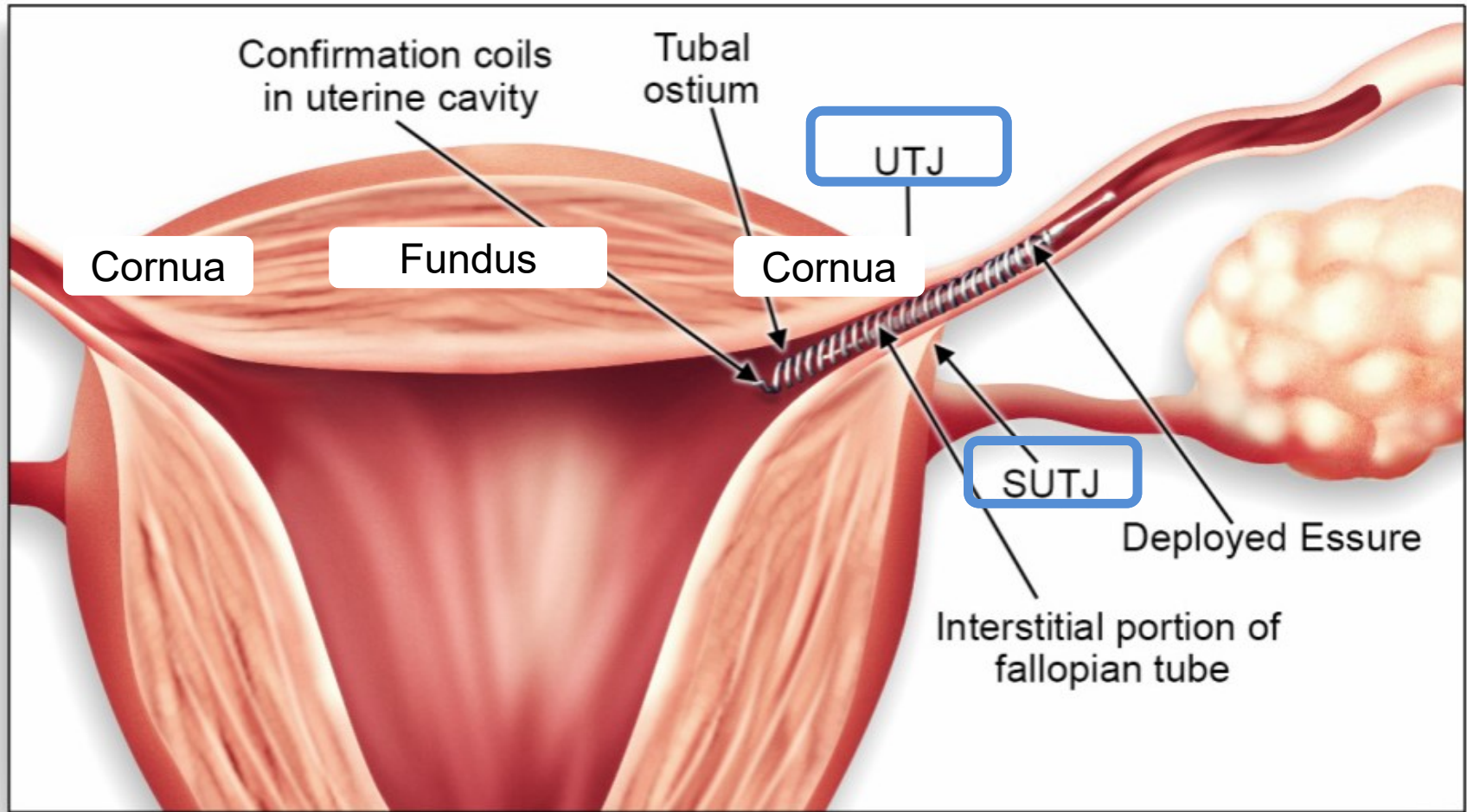
- Describes standard TVU techniques

Equipment for this procedure in the clinical trial

- Standard array probe
 - Transducer frequency: 5.8-6.5 MHz

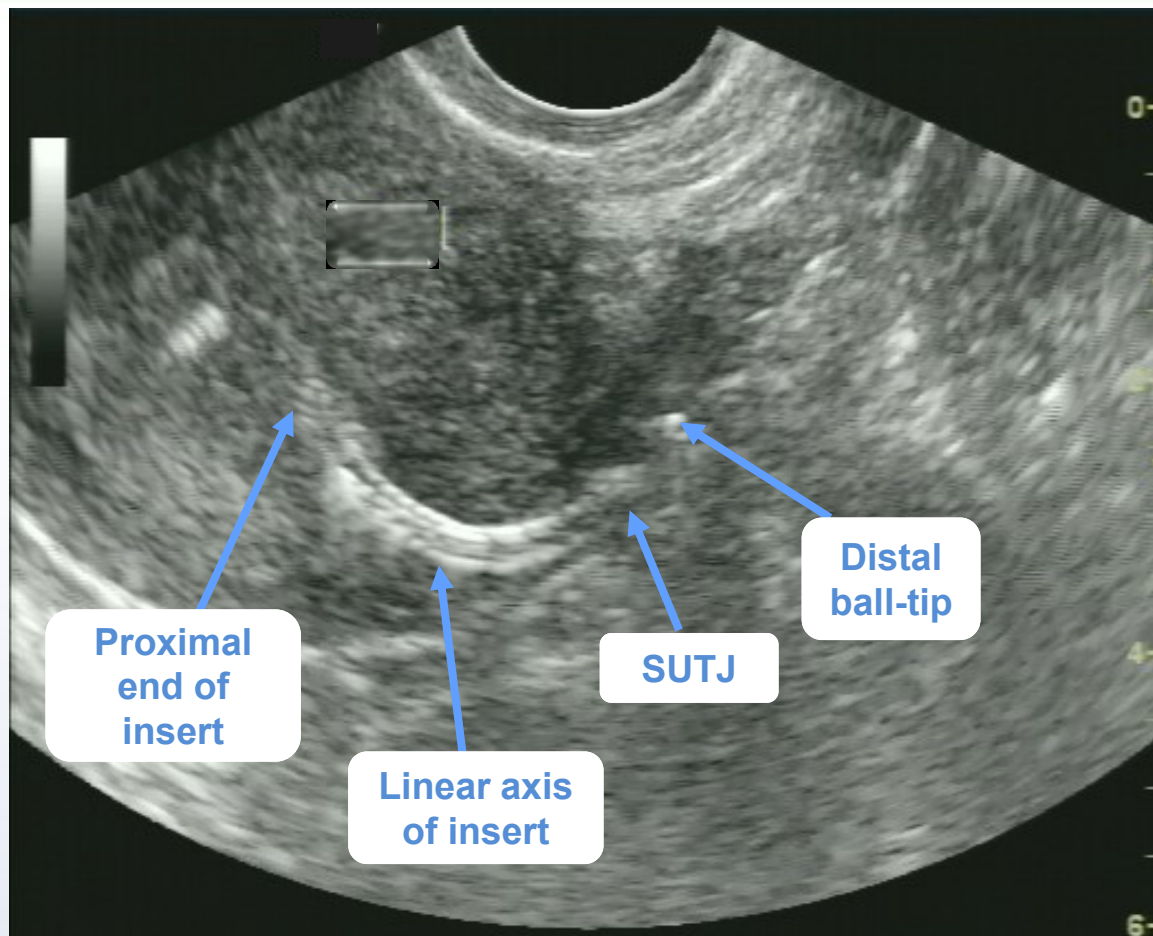
Please see [Important Safety Information about Essure®](#), including Boxed Warning, and refer to the [Essure® Instructions for Use](#)

RELEVANT ANATOMY AND TERMINOLOGY



Please see [Important Safety Information about Essure®](#), including Boxed Warning, and refer to the [Essure® Instructions for Use](#)

RELEVANT ANATOMY AND TERMINOLOGY: VISUALIZATION OF SUTJ WITH TVU

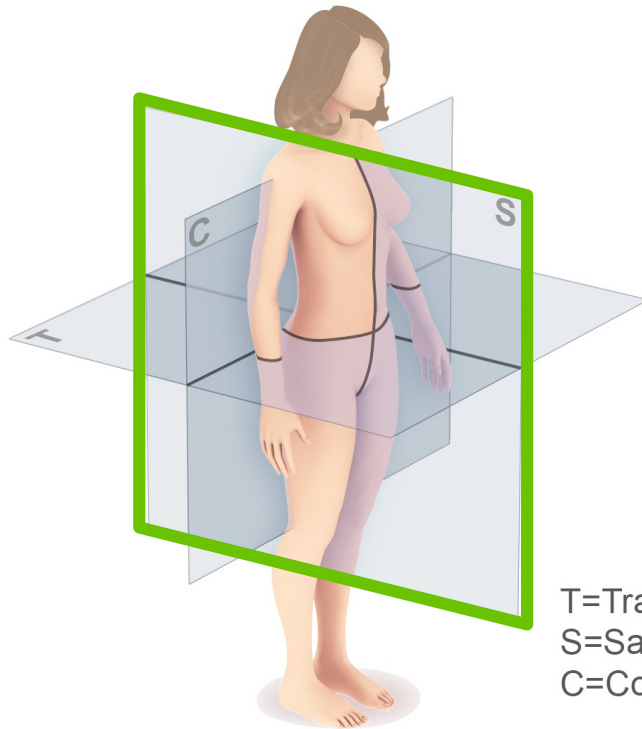


Transverse Focused View

Courtesy of Dr. Viviane Connor

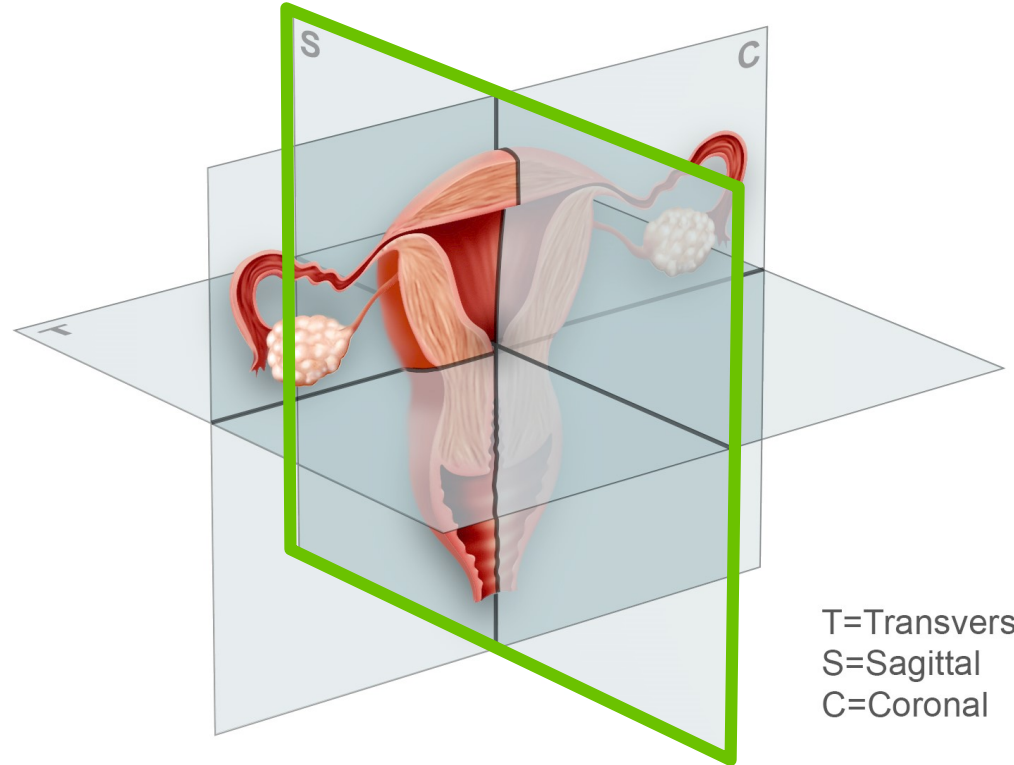
Please see [Important Safety Information about Essure®](#), including Boxed Warning, and refer to the [Essure® Instructions for Use](#)

ANATOMICAL PLANES IMPORTANT FOR TVU CONFIRMATION TEST



T=Transverse
S=Sagittal
C=Coronal

Bayer HealthCare



T=Transverse
S=Sagittal
C=Coronal

Bayer HealthCare

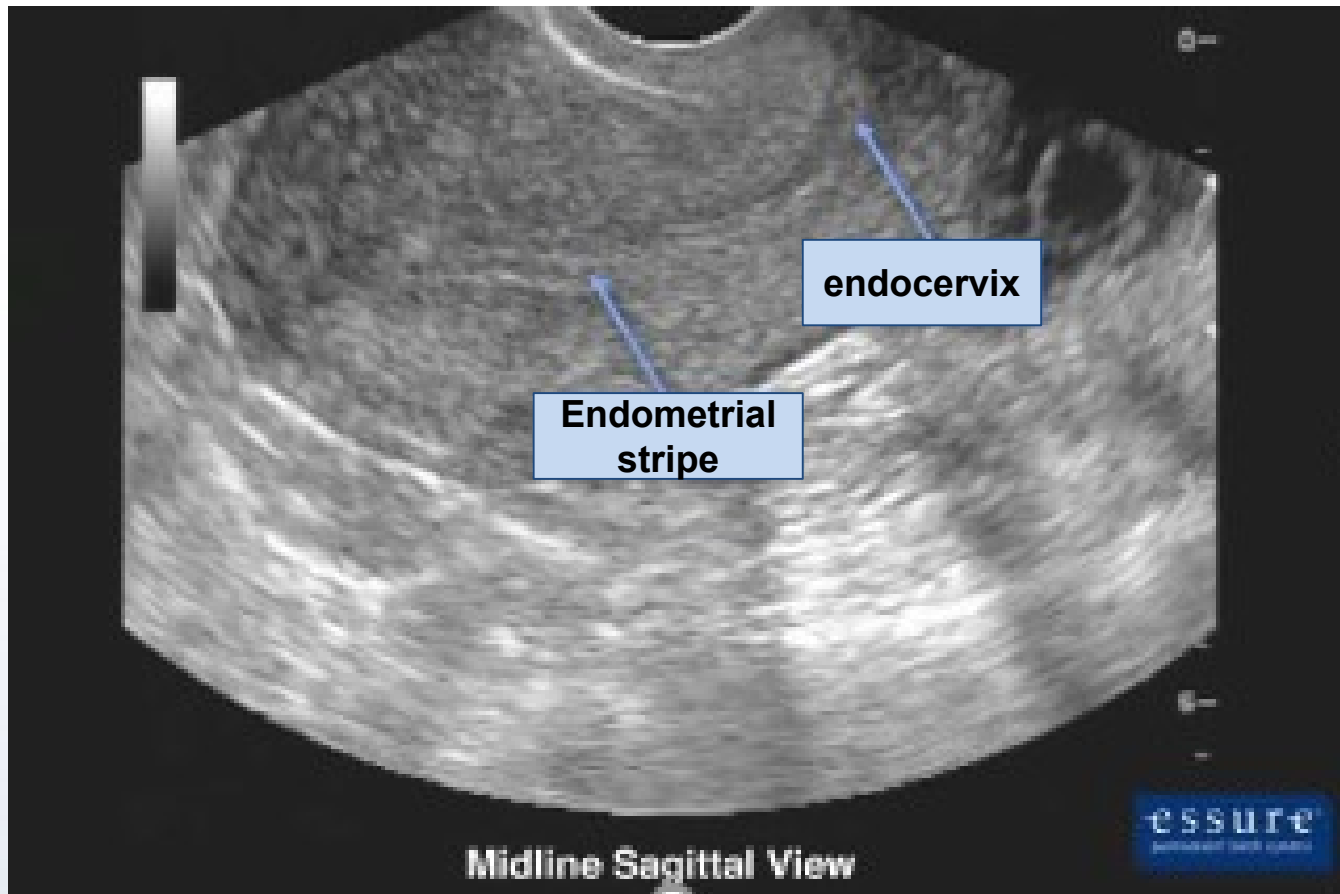
Please see [Important Safety Information about Essure®](#), including Boxed Warning, and refer to the [Essure® Instructions for Use](#)

BACK



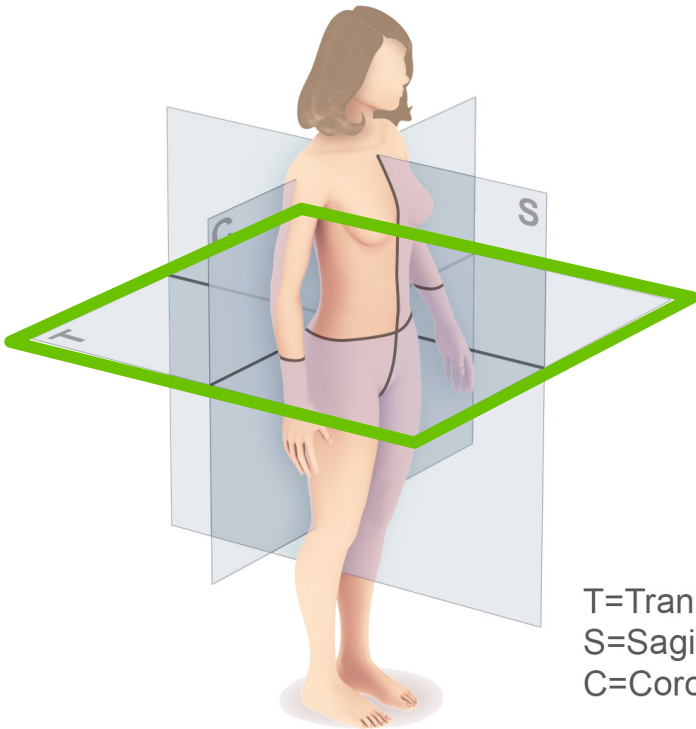
NEXT

ANATOMICAL PLANES IMPORTANT FOR TVU CONFIRMATION TEST: SAGITTAL VIEW



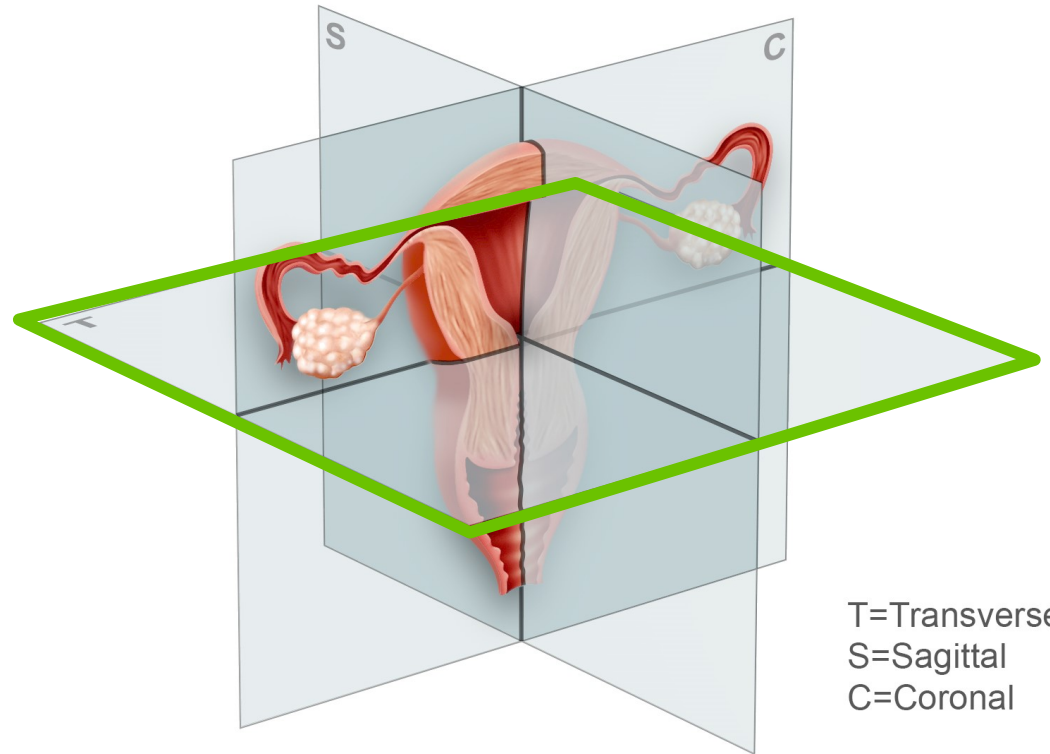
Please see [Important Safety Information about Essure®](#), including Boxed Warning, and refer to the [Essure® Instructions for Use](#)

ANATOMICAL PLANES IMPORTANT FOR TVU CONFIRMATION TEST



T=Transverse
S=Sagittal
C=Coronal

Bayer HealthCare



T=Transverse
S=Sagittal
C=Coronal

Bayer HealthCare

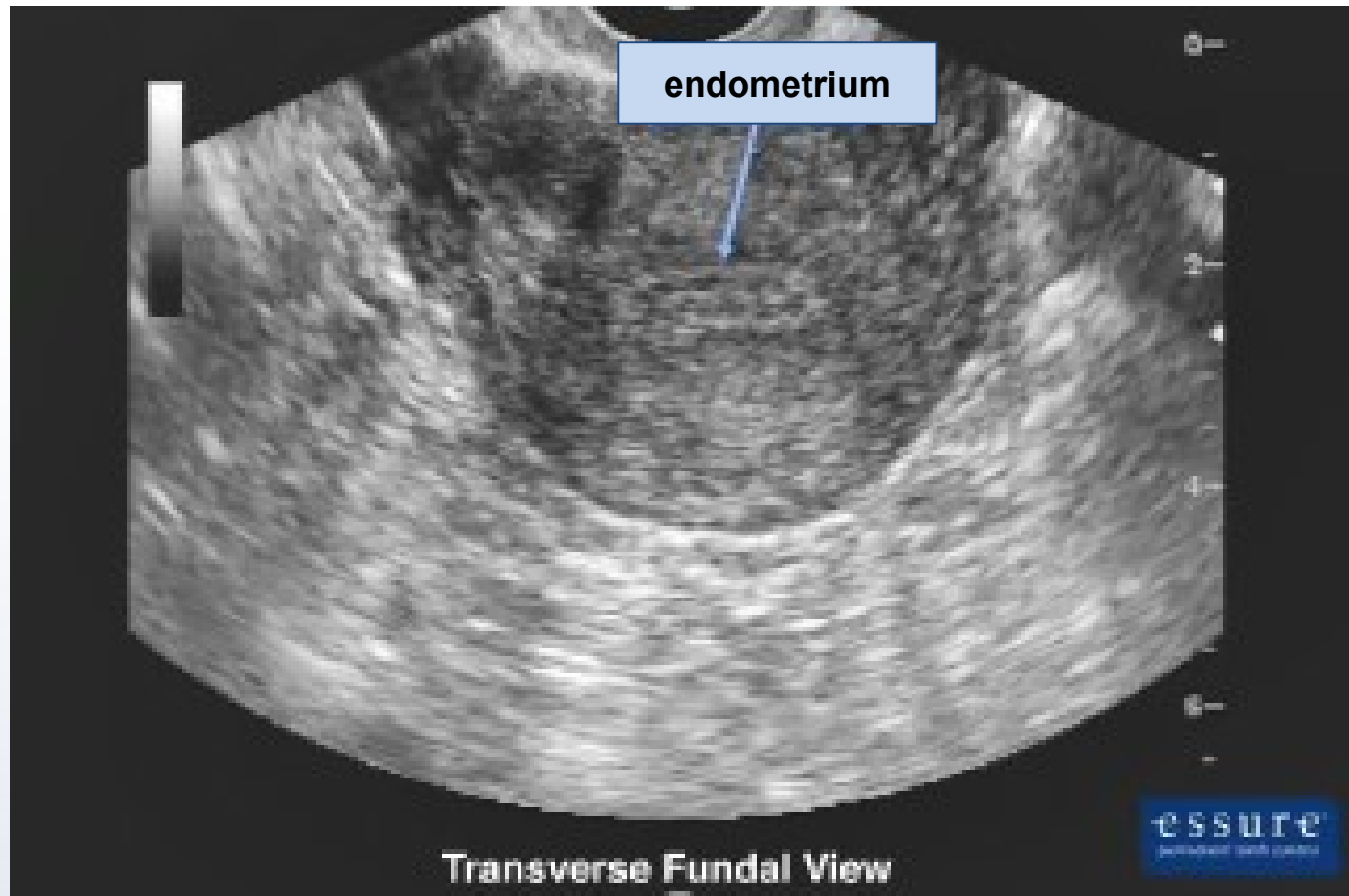
Please see [Important Safety Information about Essure®](#), including Boxed Warning, and refer to the [Essure® Instructions for Use](#)

BACK



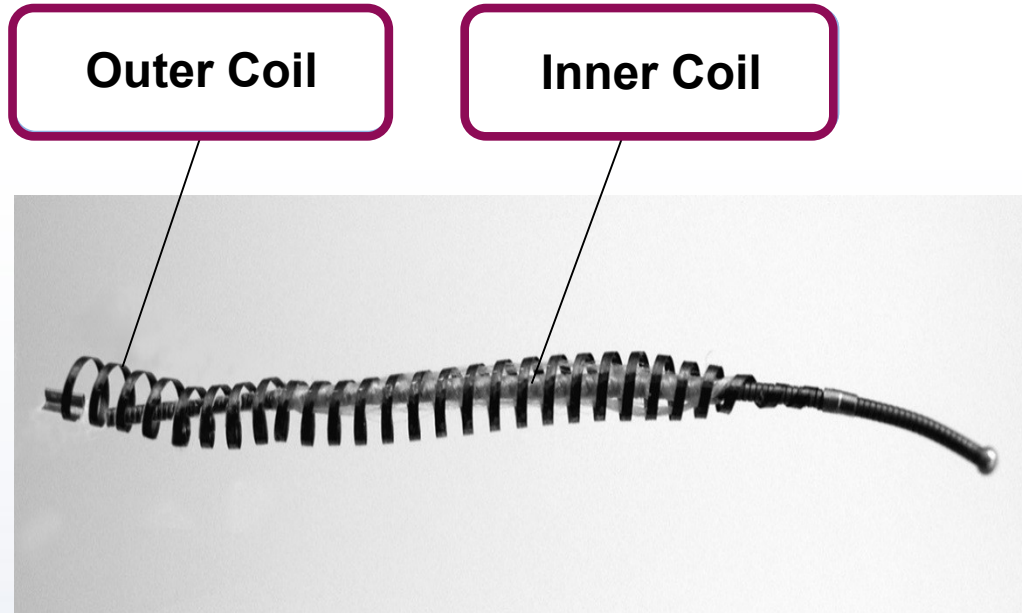
NEXT

ANATOMICAL PLANES IMPORTANT FOR TVU CONFIRMATION TEST: TRANSVERSE VIEW



Please see [Important Safety Information about Essure®](#), including Boxed Warning, and refer to the [Essure® Instructions for Use](#)

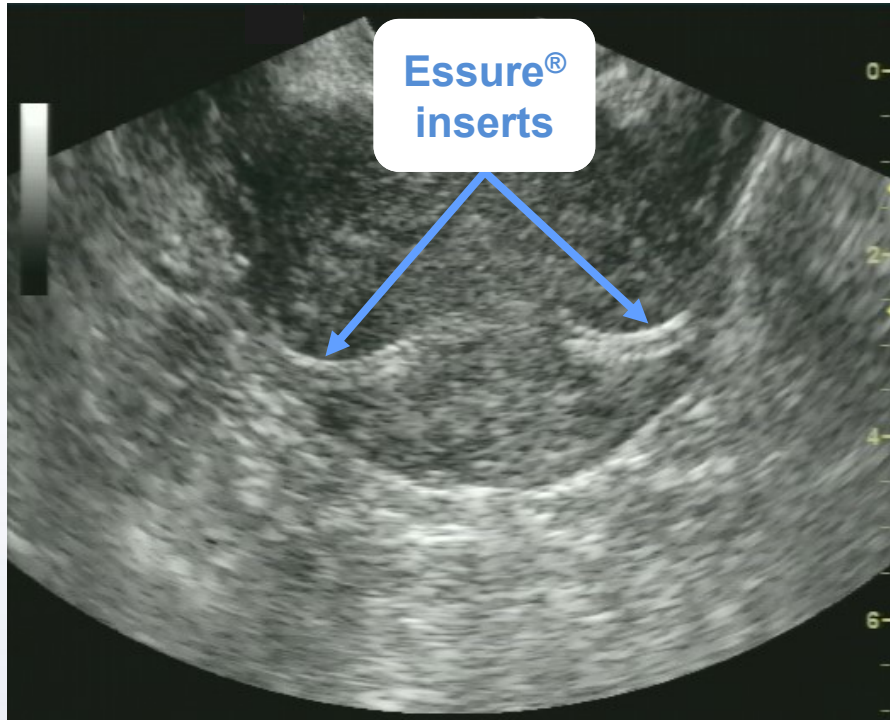
FEATURES OF AN ESSURE® INSERT



Essure® Instructions for Use (with TVU)

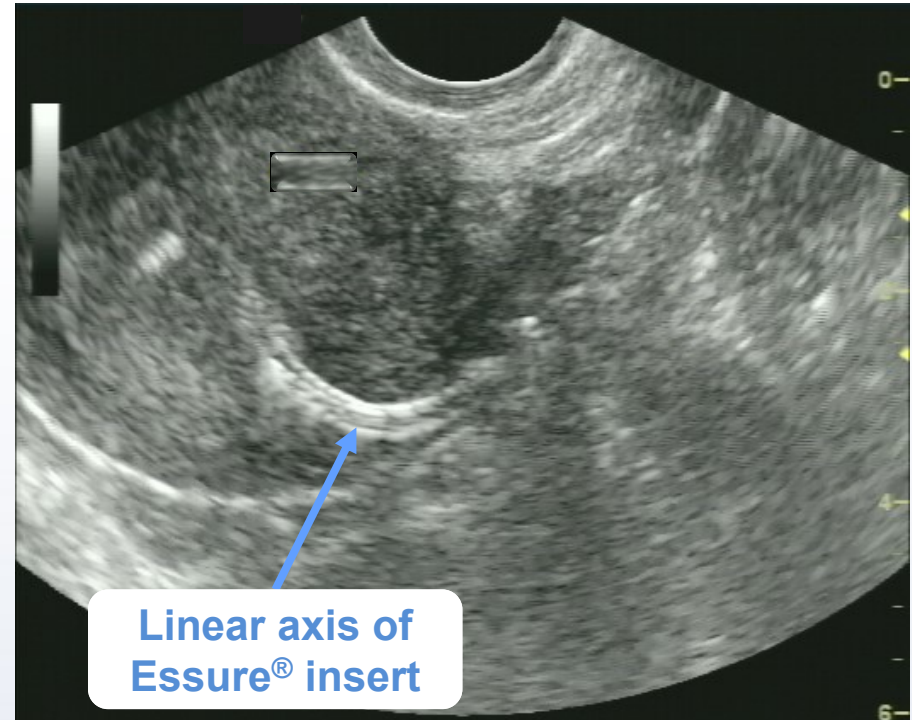
Please see [Important Safety Information about Essure®](#), including Boxed Warning, and refer to the [Essure® Instructions for Use](#)

SONOGRAPHIC IMAGE OF AN ESSURE® INSERT



Courtesy of Dr. Viviane Connor

Transverse Fundal View

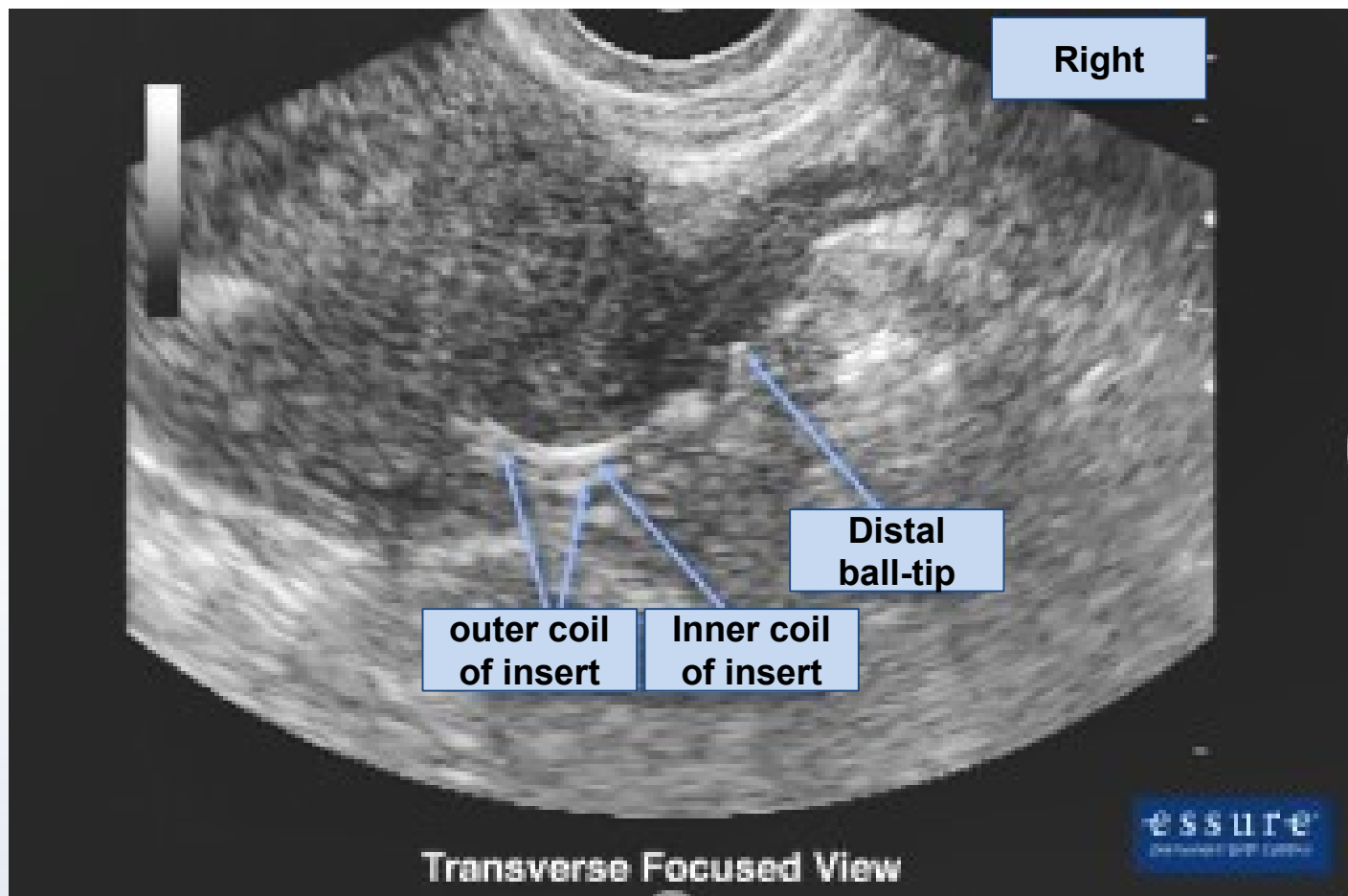


Courtesy of Dr. Viviane Connor

Transverse Focused View

Please see [Important Safety Information about Essure®](#), including Boxed Warning, and refer to the [Essure® Instructions for Use](#)

SONOGRAPHIC IMAGE OF AN ESSURE® INSERT: INSERT FEATURES



Please see [Important Safety Information about Essure®](#), including Boxed Warning, and refer to the [Essure® Instructions for Use](#)



Chapter 2: Understanding an Essure® Confirmation Test with TVU REVIEW QUESTIONS

Please see [Important Safety Information about Essure®](#), including Boxed Warning, and refer to the [Essure® Instructions for Use](#)

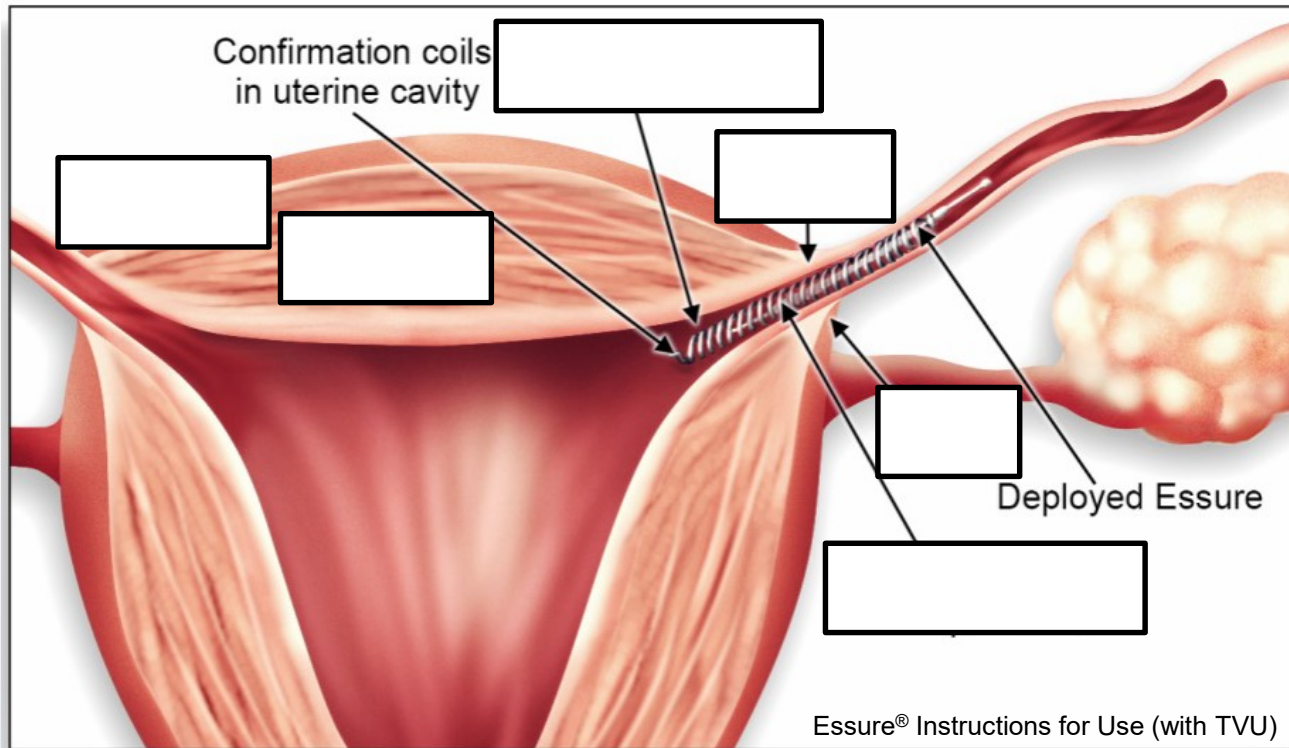
BACK



NEXT

QUESTION 1

Select the correct label for each of the blanks in the image below.
Drag and drop the label into the correct location on the image.



Interstitial portion of fallopian tube

Tubal ostium

Cornua

Fundus

SUTJ

UTJ

Submit Answers

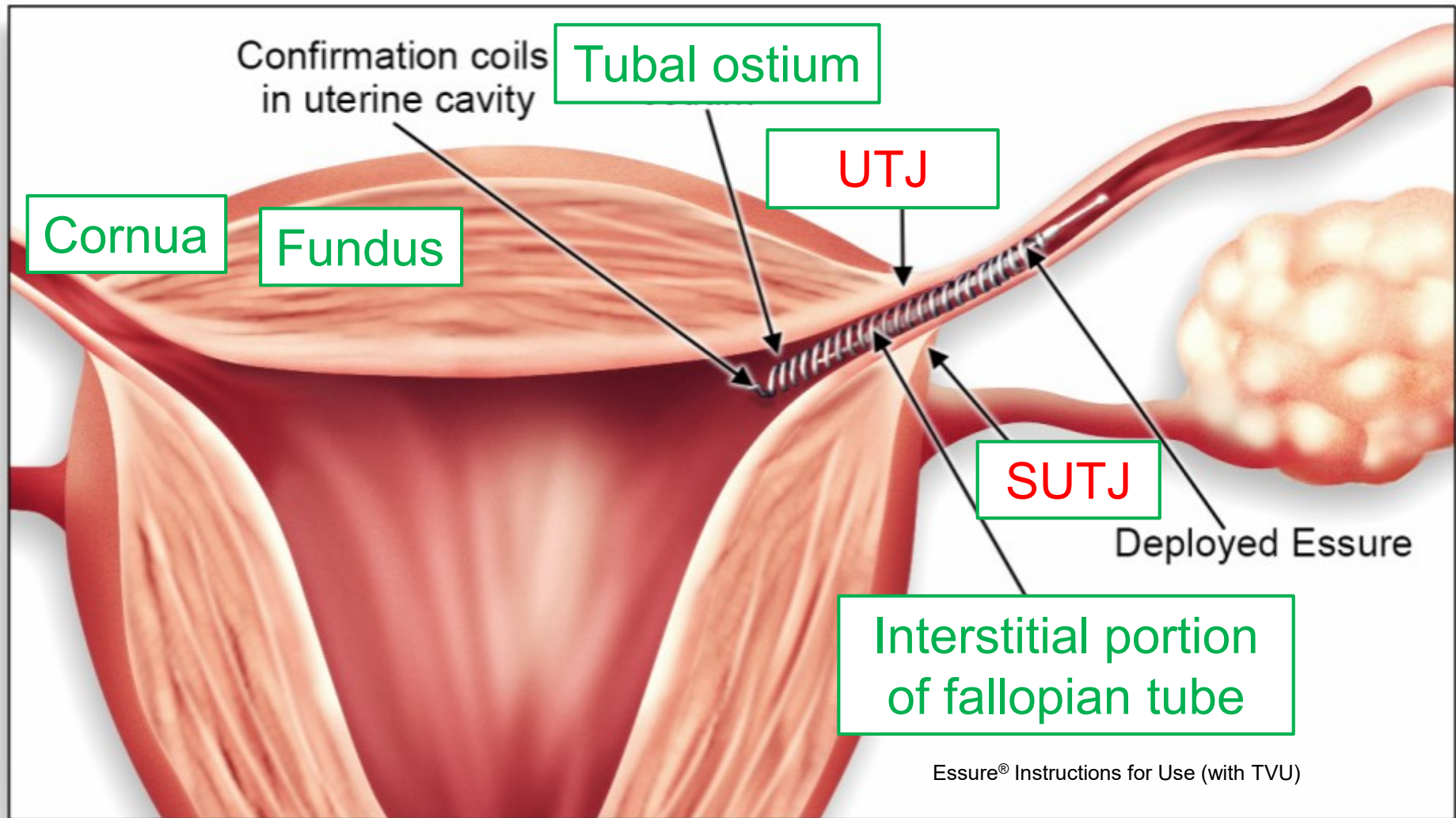
Please see [Important Safety Information about Essure®](#), including Boxed Warning, and refer to the [Essure® Instructions for Use](#)

BACK



NEXT

EXPLANATION TO QUESTION 1



Essure® Instructions for Use (with TVU)

Please see [Important Safety Information about Essure®](#), including Boxed Warning, and refer to the [Essure® Instructions for Use](#)

BACK



NEXT

QUESTION 2

Which of the following are characteristics of the normal appearance of an Essure® insert on a TVU? Select all correct answers.

- ☐ a. Notched
- ☐ b. Double-lined
- ☐ c. Coiled or bent
- ☐ d. Subtle curvature
- ☐ e. Echogenic

Submit Answers

Please see [Important Safety Information about Essure®](#), including Boxed Warning, and refer to the [Essure® Instructions for Use](#)

BACK



NEXT

EXPLANATION TO QUESTION 2

	Characteristic	Answer	Explanation
A	Notched	CORRECT	An Essure® insert can be recognized as a double-lined, notched, echogenic structure which is intact and contiguous, with a straight to slightly curved shape.
B	Double-lined	CORRECT	An Essure® insert can be recognized as a double-lined, notched, echogenic structure which is intact and contiguous, with a straight to slightly curved shape.
C	Coiled or bent	INCORRECT	If the linear axis of an insert cannot be identified, suggesting it is coiled, bent, or elongated, insert location is considered unsatisfactory.
D	Subtle curvature	CORRECT	An Essure® insert can be recognized as a double-lined, notched, echogenic structure which is intact and contiguous, with a straight to slightly curved shape.
E	Echogenic	CORRECT	An Essure® insert can be recognized as a double-lined, notched, echogenic structure which is intact and contiguous, with a straight to slightly curved shape.

Please see [Important Safety Information about Essure®](#), including Boxed Warning, and refer to the [Essure® Instructions for Use](#)

MARK CHAPTER 2 COMPLETE

- You have completed this chapter. To review any of the information in this presentation, tap/click on the topic in the menu to the left
- When you are finished, please ensure that you tap/click the “Mark Complete” button below to mark this chapter complete and exit (DO NOT use the exit “X” in your browser)
- By marking complete, you acknowledge that you have reviewed and understand all of the content contained within this chapter. The chapter content may have included, but was not limited to, tabs, pop-ups, interactive exercises, and attachments
- Please see [Important Safety Information about Essure®](#), including Boxed Warning, and refer to the [Essure® Instructions for Use](#) click on the hyperlinks here
- Please proceed to the next chapter:

Chapter 3: Performing and Interpreting the Essure Confirmation Test with TVU

Mark Complete

Please see [Important Safety Information about Essure®](#), including Boxed Warning, and refer to the [Essure® Instructions for Use](#)

BACK



NEXT